



nectre®

nectre.co.nz





Established in 1980, the Nectre brand has long been recognised as a honest and reliable wood fire that produces stunning warmth and comfort from a timeless design with easy to operate features. Today, that Nectre warmth and comfort is enjoyed in well over seven countries.

We are proud of our tradition, history and to be a leading New Zealand wood fire manufacturer. We strive to make the best heater for value while providing superior performance. We are driven to achieve manufacturing excellence and every Nectre wood fire exceeds industry standards (AS/NZS 4012:2014 and AS/NZS 4013:2014).

Nectre fires are manufactured right here in New Zealand, delivering guaranteed build quality, exceptional heating performance and timeless, classic design.



Nectre

N65 Contemporary design with great performance.

The Nectre N65 is a clean burning wood heater. Together with great looks and easy to use functions the N65 is fast becoming a crowd favourite and fits beautifully in either a traditional or contemporary living area.

- Steel door with ceramic glass
- 2 x 6mm steel baffle plate
- 6mm steel firebox
- Concealed ash-pan
- Wood storage
- Stainless Steel handle + extension
- Finished in black metallic paint
- Door aperture : 310 x 409
- Firebox size : 345(w) x 280(d) x 460(h)
- Firebox cubic size : 47.4L
- Weight : 190kg
- Maximum log width : 305
- Firebricks : 2 of 270(h) x 175(w) x 25(d)
: 4 of 270(h) x 130(w) x 25(d)
: 2 of 263(h) x 165(w) x 25(d)
- Flue spigot size : 150 (6")
- Ash Floor Protector (see page 18)

All dimensions are in millimeters (mm) unless specified otherwise.

Space Heat Output Suitable for medium to large homes (3-4 bedrooms)

Efficiency 76%

Emissions 0.90 g/kg

**BASE
OPTION**

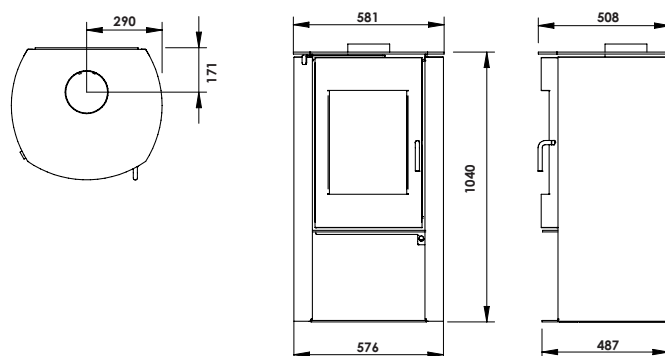


Fire Only 970906

Flue Only GDFLU013M

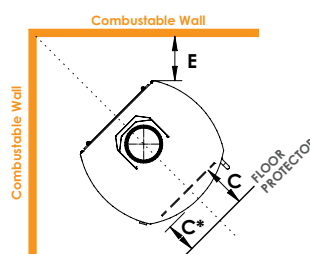
Fire & Flue Pack N65KIT

DIMENSIONS

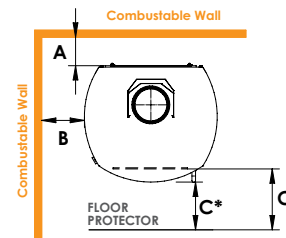


CLEARANCES

Corner Installation



Parallel Installation



Flue Shielding	A	B	C	C*	E
900mm rear flue shield	125	350	300	250	150

For detailed clearance dimensions, refer to page 19.

Space Heat Output is only a guide based on homes with average insulation, window areas, and 2.4m ceiling heights. Differences in these factors, as well as others like, geographical location, layout of the house, living room size, type of windows all play a part in choosing the right model for your heating needs. Consult your dealer or installation contractor for more information.

BAKERS OVEN

Show stopper performance and versatility.

The Nectre Bakers Oven provides excellent warmth and cooking performance. With a small footprint it fits in just about any living space without being obtrusive. The cook top adds a warming or direct cooking option. Check with your council before purchase regarding local regulations for installation of the Bakers Oven.*



- Cast iron door with ceramic glass
- 6mm steel firebox
- Stay cool spring handle
- Finished in black metallic paint
- Door aperture : 350 x 260
- Firebox size : 340(w) x 300(d) x 380(h)
- Firebox cubic size : 39L
- Weight : 170kg
- Maximum log width : 300
- Firebricks : 3 of 230 x 115 x 38
- Flue spigot size : 150 (6")
- 6mm Steel Cook Top
- Oven temperature thermometer
- Optional factory fitted domestic hot water booster with 2.5~3.0kW output**
- 12mm Insulated Floor Protector (see page 19)

*Nectre Bakers Ovens come under the wood-fired cooking appliance category and are exempt from NES rules. Each council has different rules; hence check with your local council before purchase. Generally, they are allowed if you are out of the clean air zone and over 2ha.

**Estimated output depending upon operating conditions.

All dimensions are in millimeters (mm) unless specified otherwise.

BASE OPTIONS



Without water booster



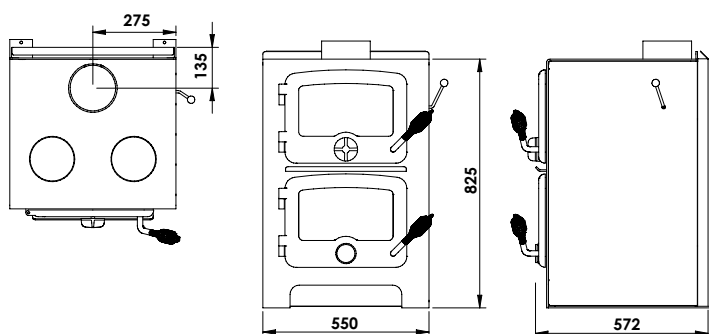
With water booster

Oven Only	970911	NBOW*
Flue Pack Only	GDFLU013M & NECTDROPBOX	GDFLU013M & NECTDROPBOXW
Oven & Flue Pack	KITBAKEOVEN	KITBAKEOVENW

*Water booster is factory fitted hence can not be retrofitted.
Order oven with water booster option at the time of purchasing.

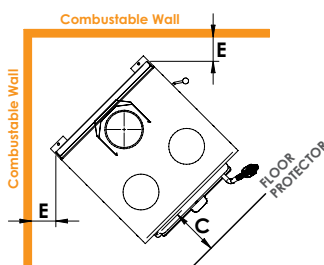
Space Heat Output is only a guide based on homes with average insulation, window areas, and 2.4m ceiling heights. Differences in these factors, as well as others like, geographical location, layout of the house, living room size, type of windows all play a part in choosing the right model for your heating needs. Consult your dealer or installation contractor for more information.

DIMENSIONS

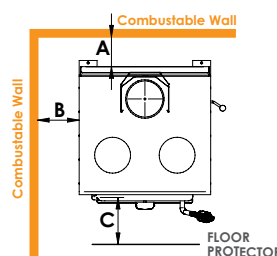


CLEARANCES

Corner Installation



Parallel Installation



Flue Shielding	A	B	C	E
900mm rear flue shield	125	350	300	350

For detailed clearance dimensions, refer to page 19.

Space Heat Output: Suitable for small to medium homes (2-3 bedrooms)

BIG BAKERS OVEN

Amazing warmth, fantastic food.

The Nectre Big Bakers Oven produces amazing radiant warmth and coverage. Designed with character and charm the Big Bakers Oven provides a spacious oven for those Sunday roasts. The cook top adds a warming or direct cooking option with removable rings. Check with your council before purchase regarding local regulations for installation of the Bakers Oven.*

- Cast iron door with ceramic glass
- 6mm steel baffle plate
- 6mm/8mm steel firebox
- Stay cool spring handle
- Finished in black metallic paint
- Door aperture : 250 x 490
- Firebox size : 485(w) x 295(d) x 300(h)
- Firebox cubic size : 43L
- Weight : 235kg
- Maximum log width : 445
- Firebricks : 4 of 230 x 115 x 38
: 2 of 250 x 70 x 50
- Flue spigot size : 150 (6")
- 8mm Steel Cook top
- Oven temperature thermometer
- Optional factory fitted domestic hot water booster with 3.0~3.5 kW output**
- 15mm Insulated Floor Protector (see page 19)

*Nectre Bakers Ovens come under the wood-fired cooking appliance category and are exempt from NES rules. Each council has different rules; hence check with your local council before purchase. Generally, they are allowed if you are out of the clean air zone and over 2ha.

**Estimated output depending upon operating conditions.

All dimensions are in millimeters (mm) unless specified otherwise.

BASE OPTIONS



Without water booster



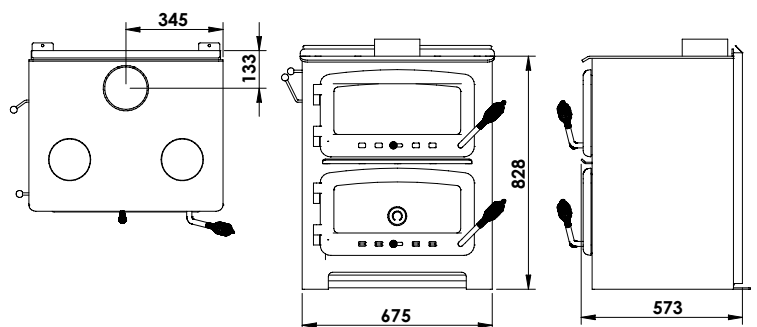
With water booster

Oven Only	970912	NBBOW*
Flue Pack Only	GDFLU013M & NECTDROPBOX	GDFLU013M & NECTDROPBOXW
Oven & Flue Pack	KITBAKEOVENBIG	KITBAKEOVENBIGW

*Water booster is factory fitted hence can not be retrofitted.
Order oven with water booster option at the time of purchasing.

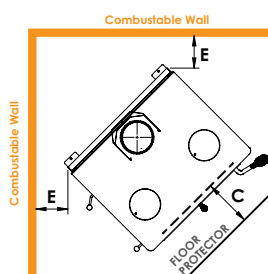
Space Heat Output is only a guide based on homes with average insulation, window areas, and 2.4m ceiling heights. Differences in these factors, as well as others like, geographical location, layout of the house, living room size, type of windows all play a part in choosing the right model for your heating needs. Consult your dealer or installation contractor for more information.

DIMENSIONS

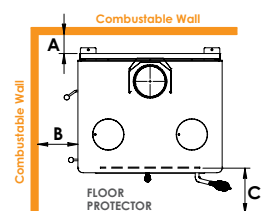


CLEARANCES

Corner Installation



Parallel Installation



Flue Shielding	A	B	C	E
900mm rear flue shield	125	325	300	275

For detailed clearance dimensions, refer to page 19.

Space Heat Output Suitable for large homes (4+ bedrooms)



All new Nectre fire boxes are guaranteed for 10 years.

Nectre warrants our fire boxes, under normal use, to be free from defects in materials or workmanship (from the date of purchase)* for 10 years.

This applies to only the firebox and excludes operational consumables, such as bricks, baffles and air bars etc.

Installation

When installed in the correct manner as shown in the Nectre Installation Manual (supplied with the fire), your fire will provide a cleaner and more energy efficient warmth. Nectre recommends that all installation work be carried out by an installer who has completed the NZHHA certification programme. We recommend that your Nectre Fire is installed with an approved Masport flue kit.

* Terms and conditions apply, see Installation and Operations Manual for warranty details.



Glen Dimplex New Zealand Ltd PO Box 58473, Botany, Auckland

Glen Dimplex New Zealand Ltd's policy is one of continuous development. We reserve the right to change size and specifications without notice. For confirmation of Nectre product details please refer to www.nectre.co.nz. Please refer to the installation and operation instructions before having your Nectre Wood Fire installed. A full set of these instructions is supplied with each fire.

nectre.co.nz

February 2023