

Nectre N65 - Technical Specifications

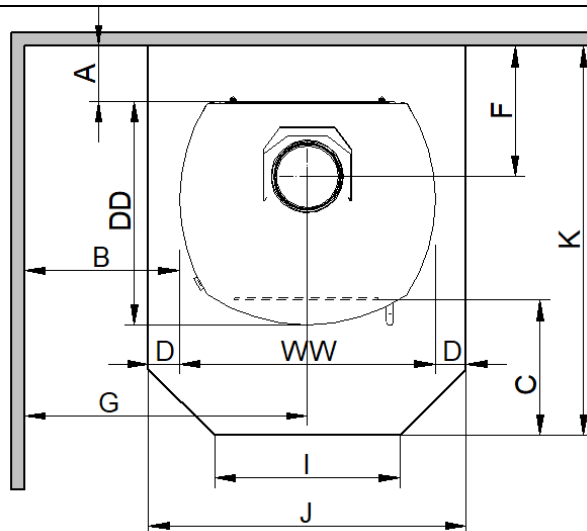
(These instructions must be used in conjunction with the "Installation Instructions" for N65 Fire)

N65 burner models have been tested and complies to following standards & tests:
NZ National Environmental Test Standards - AS/NZS 4012:2014 and AS/NZS 4013:2014.
NZ National Environmental Safety Test Standard - AS/NZS 2918:2001

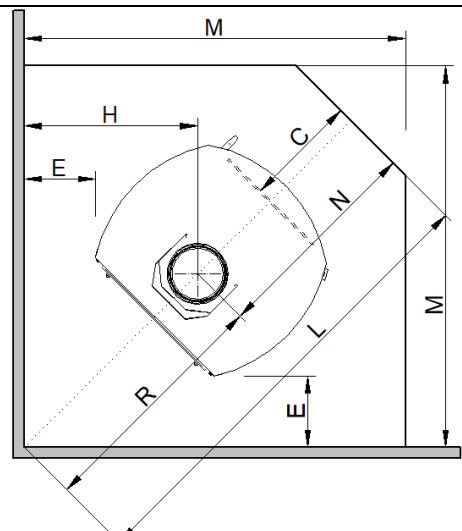
Overall Dimensions	581mm Wide x 508 mm Deep x 1040mm High		
Weight	190 kg		
Test Method	Emissions mg/MJ	Emissions g/kg	Efficiency %
National Environment Standard AS/NZS 4012/13:2014	69 mg/MJ	0.9 g/kg	76%
Approx. Heating Capacity	Medium Homes (up to 3 bedrooms)		
Flue Shield	900mm Long SS Masport Double Flue Shield		
Flue System	Standard 4.2M Long, 150mm Masport Flue System Or Flue System that has been tested and comply with AS/NZS 2918:2001, Appendix F.		
Floor Protector Requirement	Ash Floor Protector		

Clearances to Combustibles

Parallel Installation



Corner Installation

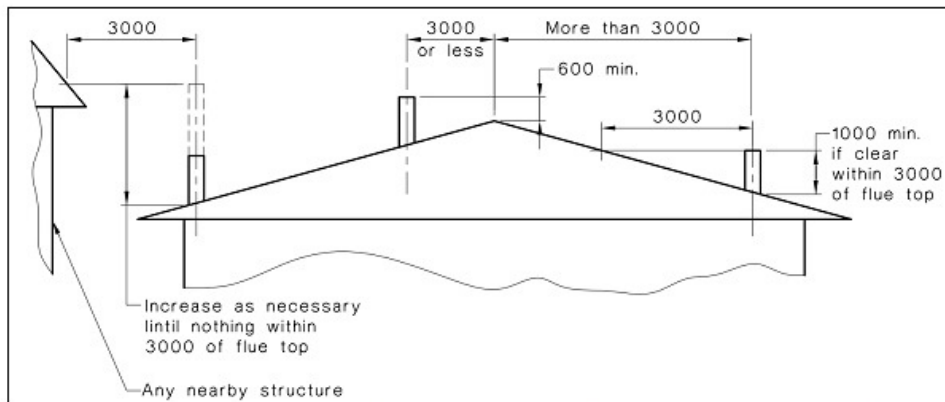
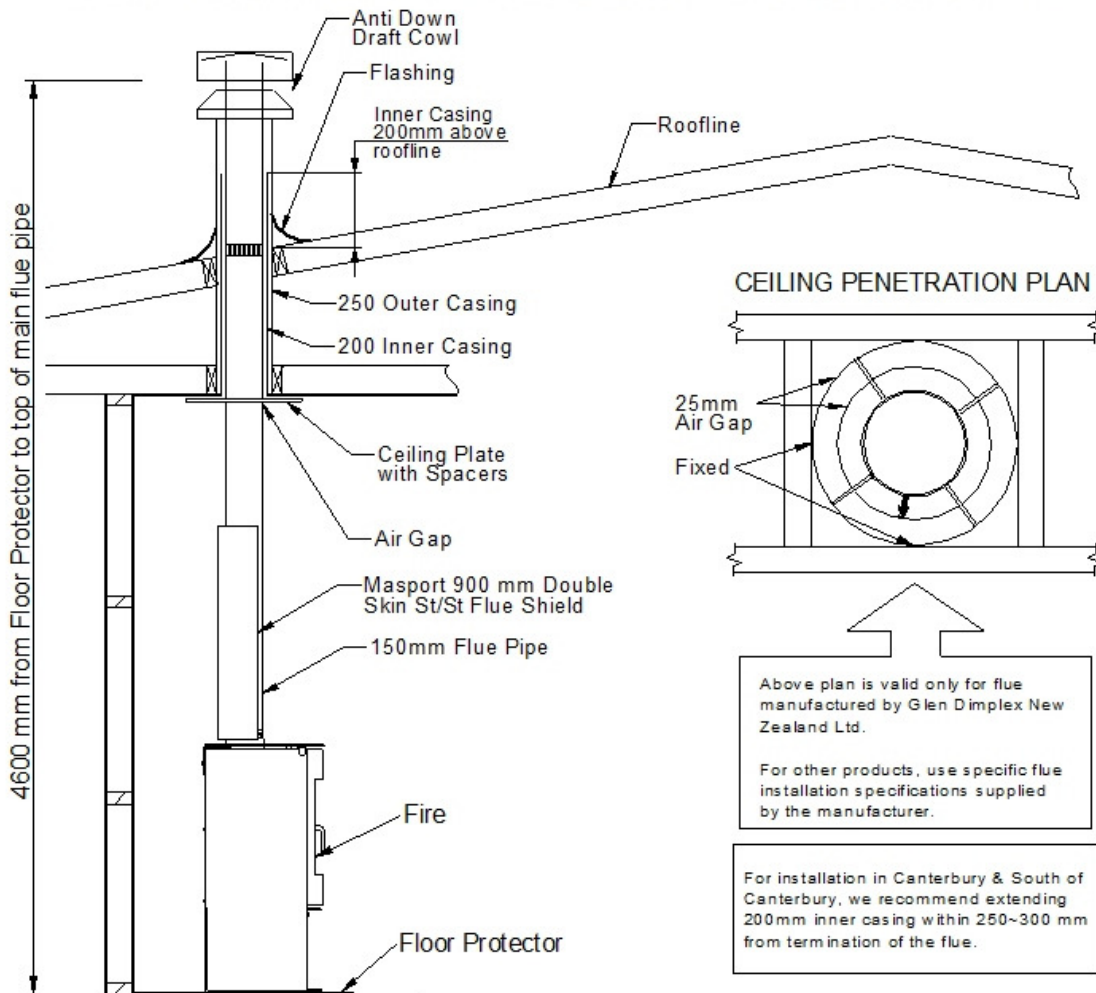


A- Rear Panel to Rear Wall	125 mm	C- Glass to Floor Protector Front	300 mm
B- Cooktop Edge to Side Wall	350 mm	E- Cooktop Corner to Wall	150 mm
C- Glass to Floor Protector Front	300 mm	H- Flue Centre to Wall	427 mm
D- Floor Protector Side	144 mm	L- Floor Protector Diagonal	1192 mm
F- Flue Centre to Rear Wall	296 mm	M- Floor Protector Side	1056 mm
G- Flue Centre to Side Wall	641 mm	N- Flue Centre to Floor Protector Front	588 mm
I- Floor Protector Front Edge	540 mm	R- Flue Centre to Wall Corner	604 mm
J- Floor Protector Width	870 mm	WW- Overall Width of Fire	581 mm
K- Floor Protector Depth	884 mm	DD- Overall Depth of Fire	508 mm
		HH- Overall Height of Fire	1037 mm

Seismic Restrain - In New Zealand it is required that the wood burner and floor protector are secured to prevent shifting in the event of an earthquake. This is best done by fastening the wood burner right through the protector to the floor, using 8mm DynaBolts or 8mm coach screws or equivalent toggle fasteners for wooden floors of appropriate lengths. Seismic holes are at the rear of the burner.

Standard 4.2m Long, 150mm Masport Flue System

The Masport flue system has been tested and complies to AS/NZS 2918:2001 Appendix F.



If a flue exits out of the roof within 3 meters from the ridge, the outer shield height shall be not less than 600mm above the ridge. If the flue exits further than 3 meters out from the roof ridge then it must project at least 1000mm above roof penetration. This dimension may need increased to ensure that the top of the flue is at least 3 meters away from the roof or other obstructions when measured horizontally.

The flue pipe shall extend not less than 4.6m above the top of the floor protector. Due to factors such as roof pitch, predominant winds, nearby obstructions (ie. trees, buildings), and fire placement, flue lengths and hats/cowls may vary.